

Goals of the MARIO platform:

To be user driven

To provide assistance

To be a companion

To aid connectedness

To support the failing memory of people with dementia

To improve quality of life

To be acceptable to the elderly

To perform Comprehensive Geriatric Assessments (CGAs)



Find out more about me at www.mario-project.eu or scan the QR Code.



MARIO



MARIO is funded by the European Union's Horizon 2020 research and innovation programme, within the thematic section "Societal Challenge on Health, Demographic Change & Wellbeing"



Managing Active & healthy aging with use of caRing service rObots

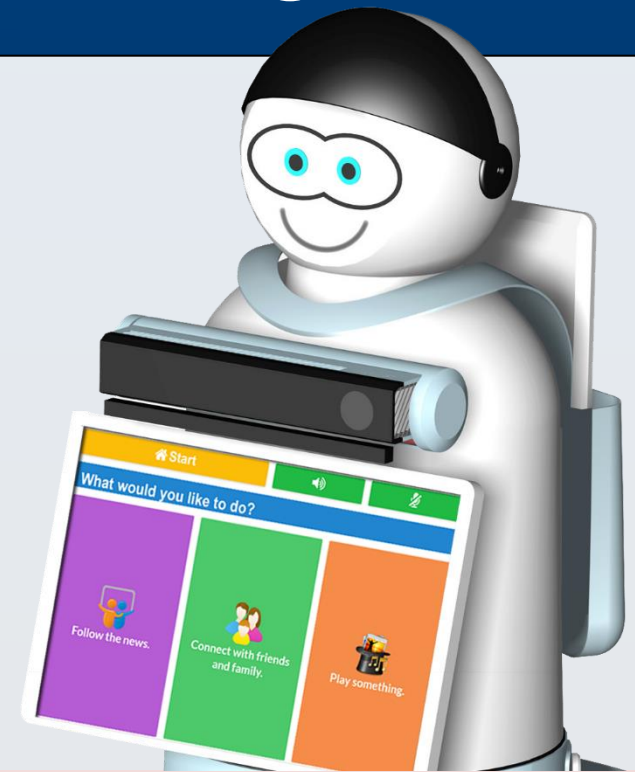
MARIO: Healthy aging with use of caring service

MARIO is a companion robot being designed to work with older people and people with dementia.

MARIO addresses the difficult challenges of loneliness, isolation and dementia in older persons by providing an **interactive** and **extensible** service robotics platform targeted towards healthy aging.

MARIO is already deployed in pilot sites in Ireland, Italy and the UK!

**Want to know more?
Join MARIO Net!**



Key Features of MARIO

MARIO aims to address the difficult challenges of loneliness, isolation and dementia in older persons.

- Focuses on addressing the needs of people with dementia and their caregivers.
- Tested with end users and in assisted living environments.
- Supports caregivers and physicians with comprehensive geriatric assessments (CGAs).
- Capable of supporting and receiving "robot applications" similar to the developer and app community for smartphones.
- Use of semantic computing methods to make MARIO more personable, useful, and accepted by end users.
- Uses state of the art robotic platforms that are flexible, modular, friendly, low cost and close to market ready in order to provide real and affordable solutions for people with dementia.
- Bring MARIO service robot concepts out of the lab and into industry.